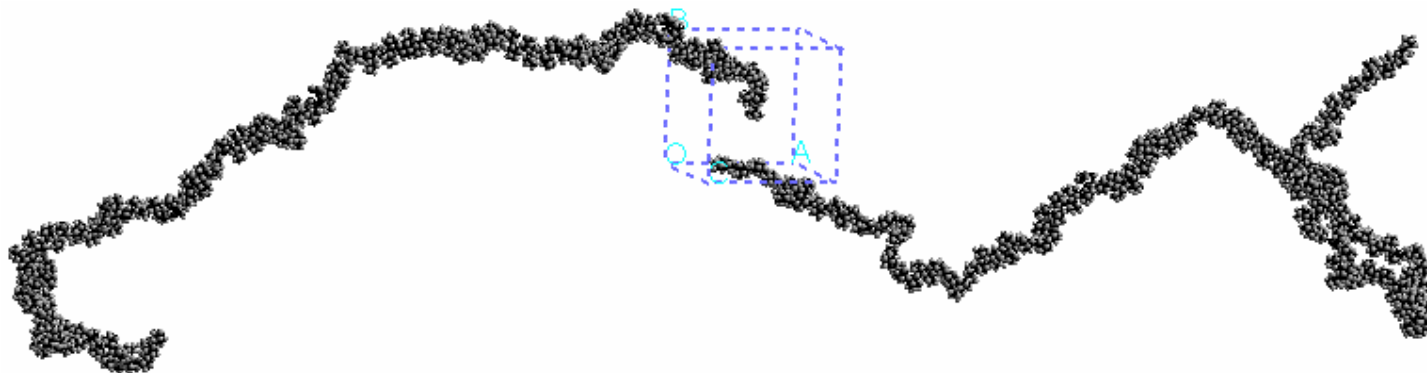
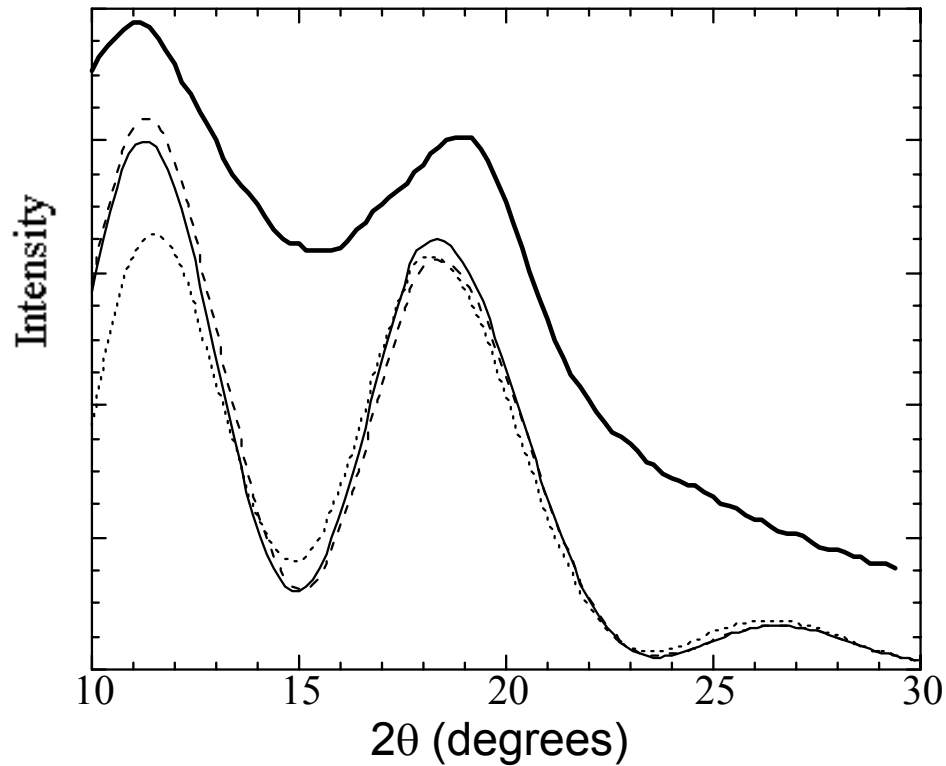


Advanced Cyclic Poly(olefin) Additives to Increase Carpet Fiber Resiliency

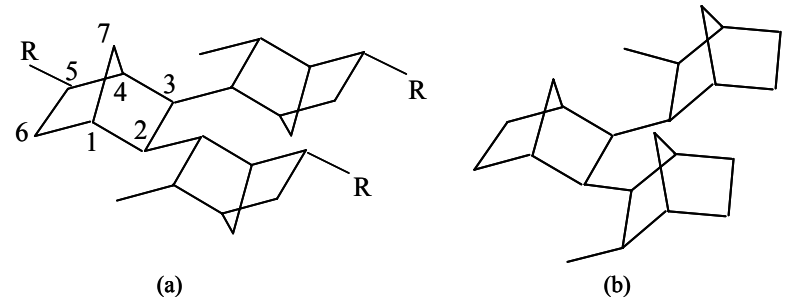


Pete Ludovice
School of Chemical & Biomolecular Engineering
Georgia Institute of Technology
Atlanta, Georgia U.S.A.

Erythro di-isotactic poly(norbornene)



- PNB Expt.
- PNB Model 1 chain N=200
- - - PNB Model 4 chains N=30
- · · PNB-co-PE



Simplified Theory

TIME = MONEY

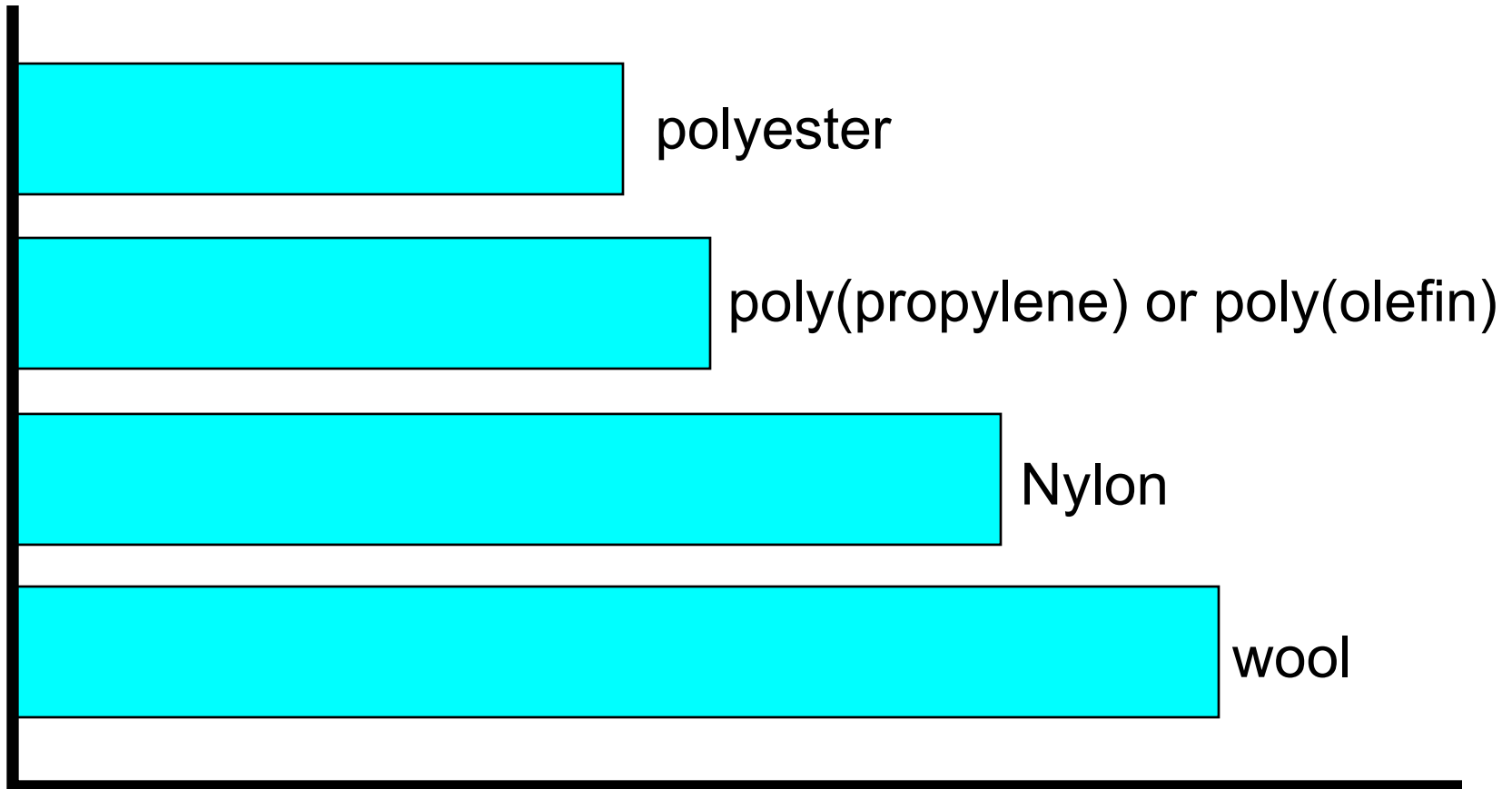
Carpet Recycling – It's not just for breakfast anymore



Pete Ludovice

School of Chemical &
Biomolecular Engineering
Georgia Institute of Technology
Atlanta, Georgia U.S.A.

Carpet Fiber Comparison



fiber performance in improving your marriage

Know Your Fibers



- Poly(propylene terephthalate) or poly(trimethyl terephthalate) PTT or Corterra[®].
- Kinked conformation that helps fibers spring back.
- This is a fiber you need to know well.

Improved PR for CARE



- Thanks to CARE for all their recycling efforts
- Look to their logo for talk motivation...
- Could generate more interest if logo was customized
- For example, the logo for New York, north Jersey or south Boston
- Chicago logo
- California logo

California Roll



Nori Sushi Variety



California Highway Variety

Recycling Ideas

- Hair pieces



- Dog Food



- Human Food

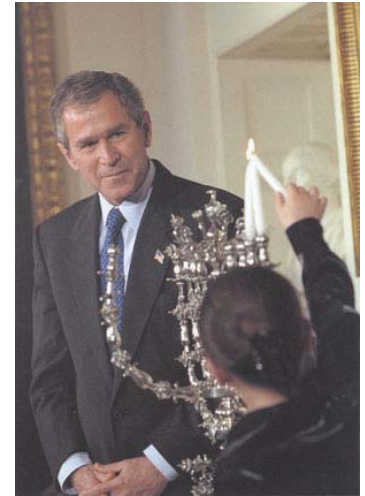


No bad chemicals just bad chemical names

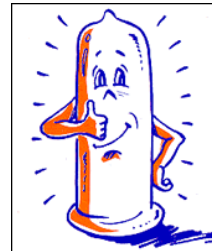
- Whole milk
- Sucrose
- Cream
- nonfat milk solids
- corn syrup solids
- mono and diglycerides
- guar gum
- imitation vanilla flavor
- carrageenan
- cellulose gum
- vitamin A palmitate

More Recycling Ideas

- Holiday Decorations



- Latex backing has great recycling potential



Need some aggressive marketing



NIKE
JUST DO IT



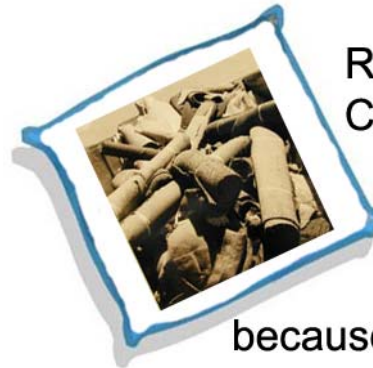
Energizer
It keeps going and going and going...



Chevy Truck
Like a rock.

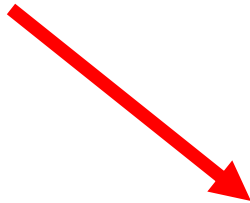


KFC
Finger-lickin' good.

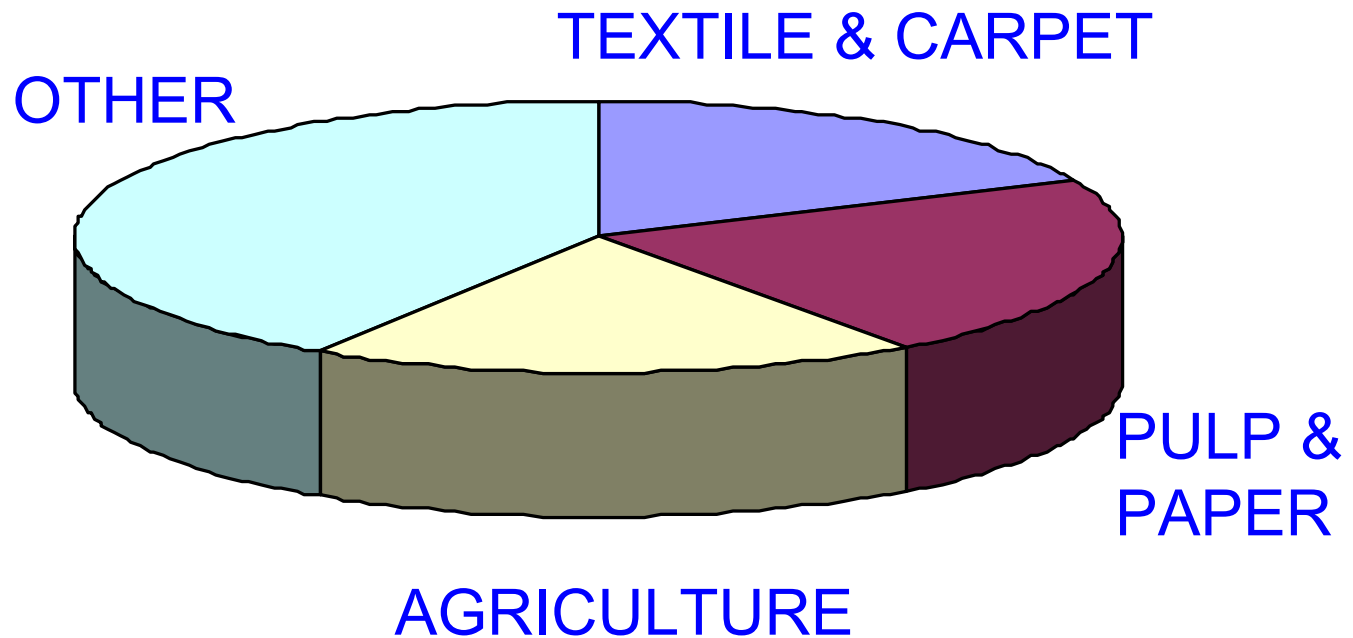


Recycled
Carpet
because we CARE

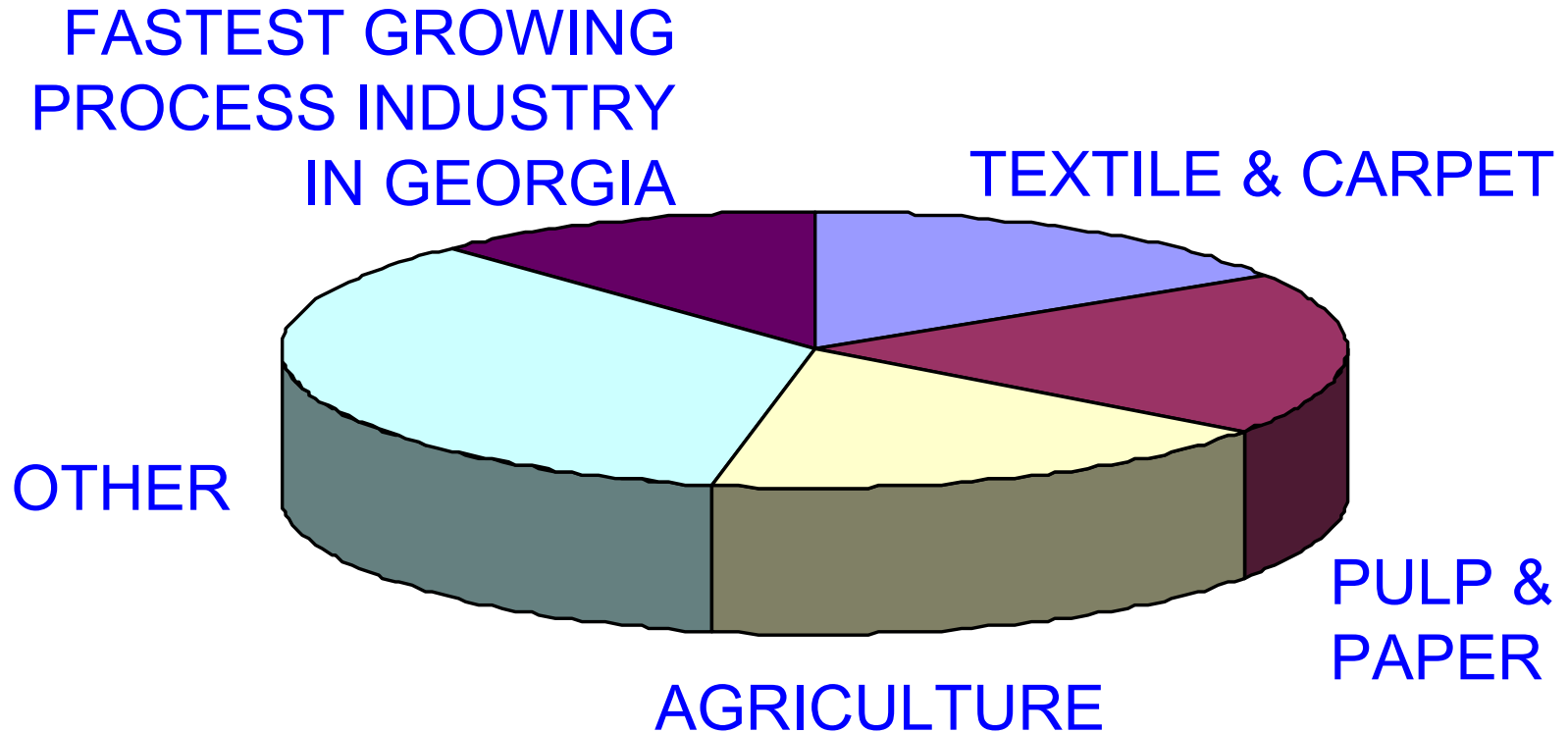
Carpet Recycling Image



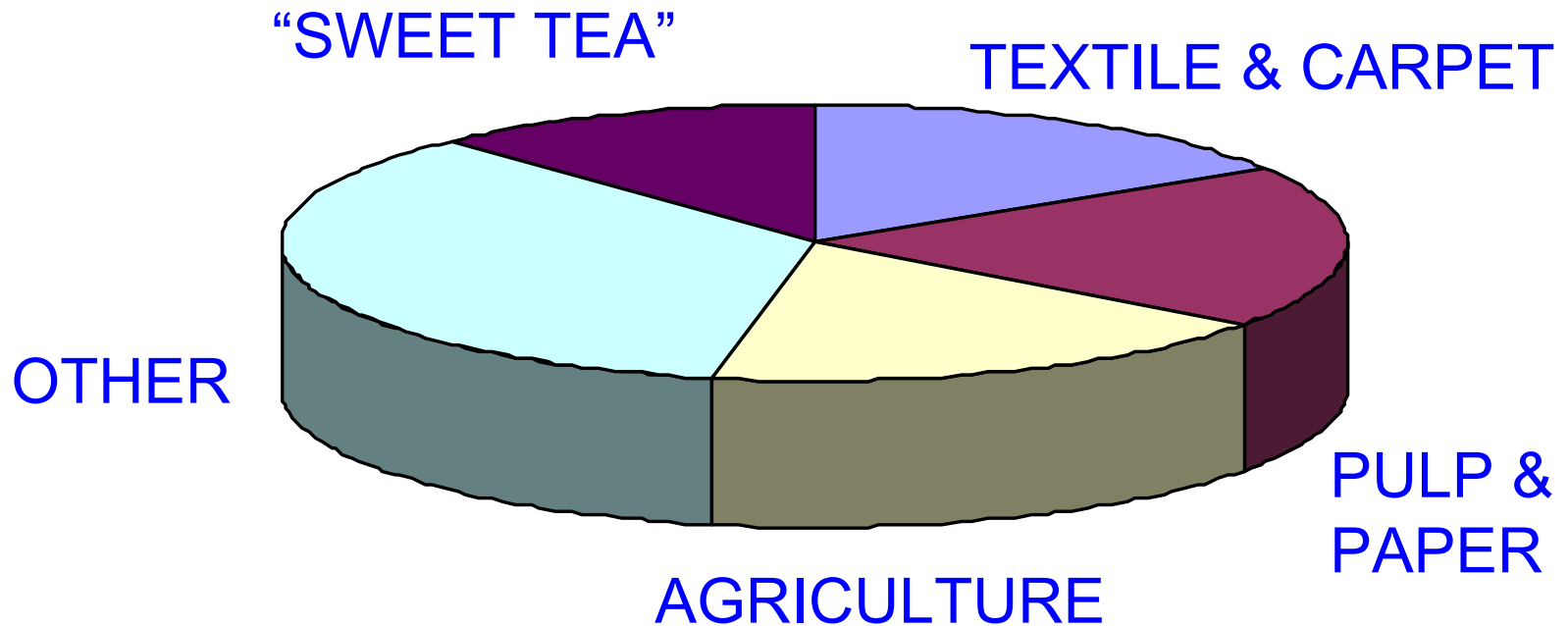
Process Industries in Georgia



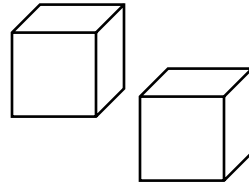
Process Industries in Georgia



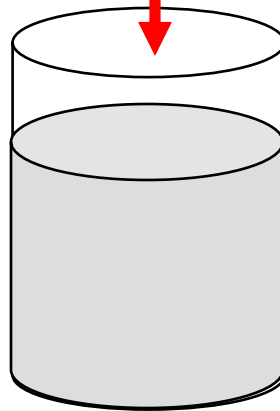
Process Industries in Georgia



Sweet Tea – The Yankee Process

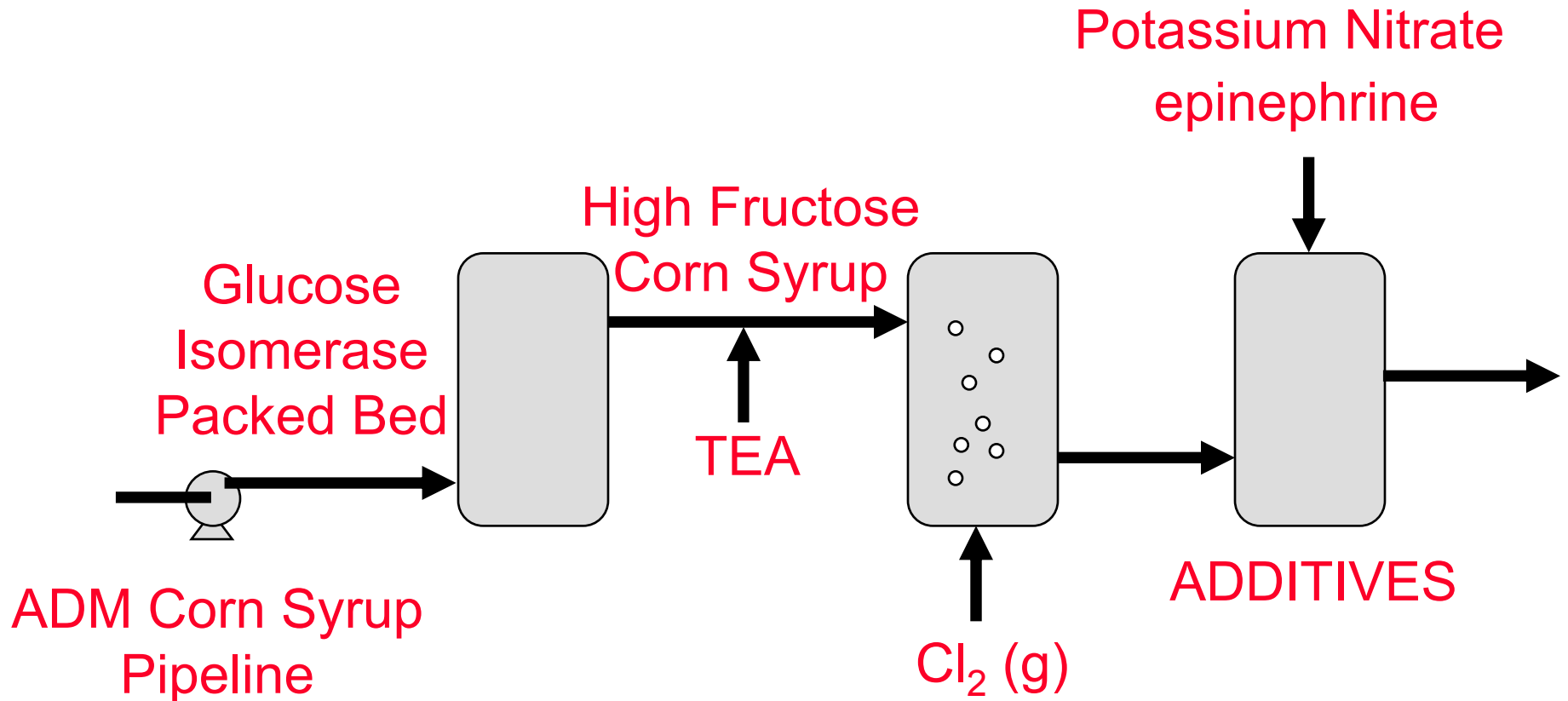


SUGAR

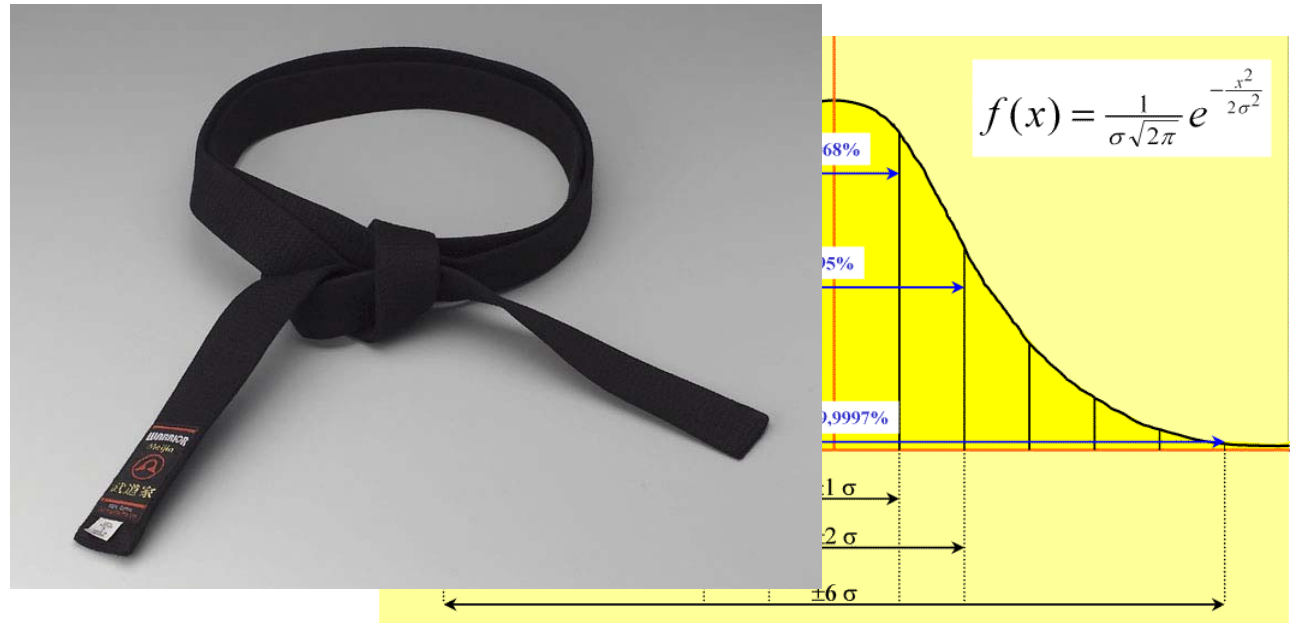
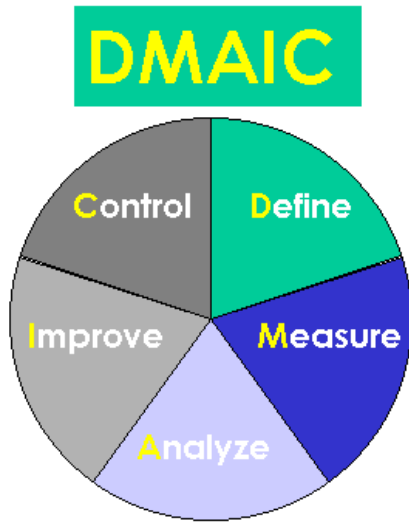


ICED TEA

Sweet Tea – The Georgia Process



Try the organized approach



Prof. Martha Gallivan, Vice Chair
AIChE Session 168
Applications of SPC/TQC/Six Sigma

Six Sigma Session



Nobody told us
academics the
BLACK BELT
was just a title!

Six Sigma Session



Speakers going past the allotted time
did not expect a martial arts solution

Spice up the CARE web site


Carpet America Recovery Effort - Recycling and Reusing Post-Consumer Carpet - Microsoft Internet Explorer

File Edit View Favorites Tools Help

Address <http://www.carpetrecovery.org/>

Google evolution Search Web 11 blocked AutoFill Options evolution

Y! Search Web Mail My Yahoo! Games Personals Music Finance Sign In

 **CARPETAMERICARECOVERYEFFORT**
Developing market-based solutions for the recycling and reuse of post-consumer carpet

Our Sponsors:

Sustainability Leadership
Interface Flooring Systems

Green
Honeywell Nylon
J&J Commercial

Corporate
Antron® Carpet Fiber
Cycle-Tex
ERCS
LA Fiber
Mannington
Mohawk
Propex Fabrics
Royalty
Shaw
SI Flooring Systems
Solutia
SWIX

Read more about CARE sponsorship.

**** REGISTER NOW for CARE 3rd Annual Conference**

**** CARE Quarterly Newsletter - March 2005**

**** See Our Updated List of Reclamation Opportunities for Post-Consumer Waste Carpet**

Six Sigma Black Belts Gone Wild!

Internet

Reverse Recycling



Polyester Beer Bottles

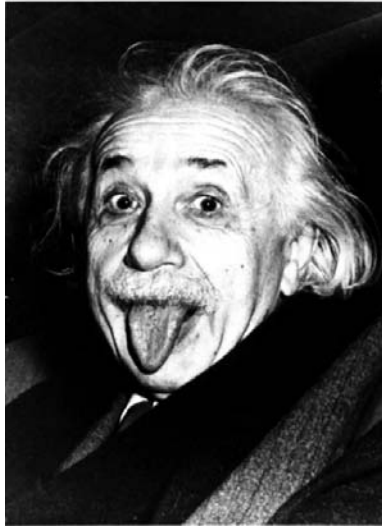


Polyester Carpet

Carpet Recycling is Evolutionary



NOT IN COBB COUNTY!!!!



NERDS

**NOT JUST FUNNY-
LOOKING ANYMORE**

www.drIudicrous.com